

Marathon[®]

Strength its flexibility



Precision to Enhance Life...

Marathon[®]

Strength its flexibility

Ordering Information

Cat Code	Length	Tip Shapetype	Type
110635	195 cm	ST	Intermediate Wire
110637	195 cm	ST	Floppy Wire
110643	195 cm	J	Intermediate Wire
110645	195 cm	J	Floppy Wire



Precision to Enhance Life...

Invent Bio-Med Pvt. Ltd.

Head Office :
24, Piramal Industrial Estate Bldg. No. 4, 1st Floor, Piramal Nagar,
S.V Road, Goregaon (W), Mumbai 400 062, INDIA.
Tel.: +91 22 4022 2109 / 2876 9694.

Manufacturing Unit :
109, Special Economic Zone,
Diamond Park, G.I.D.C., Sachin, Surat,
Gujrat 394 230, INDIA.

Authorized Representative :
Mdi Europa Gmbh,
Langenhagener Str. 71 30855, Hannover, Langenhagen, Germany.
Tel.: +49 511 3908 9530.

Marathon/CAT/Rev 02, Date 08022022

PTCA Guide Wires FOR CARDIOLOGY

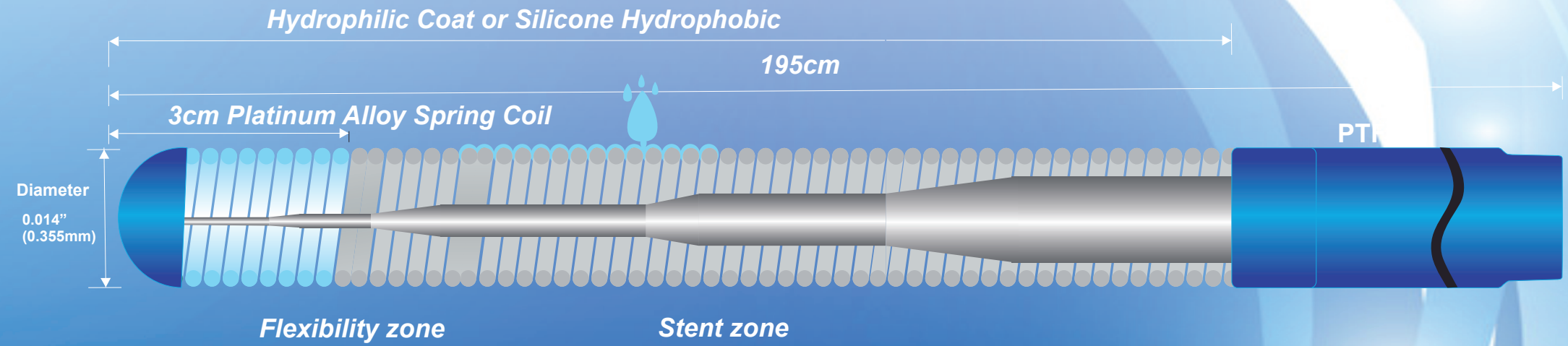


Customer Care : +91 22 2876 9991 • Email : info@inventbiomed.com • www.inventbiomed.com

Invent Bio-Med Pvt. Ltd. Reserves all rights to make changes in product without notice and obligation.

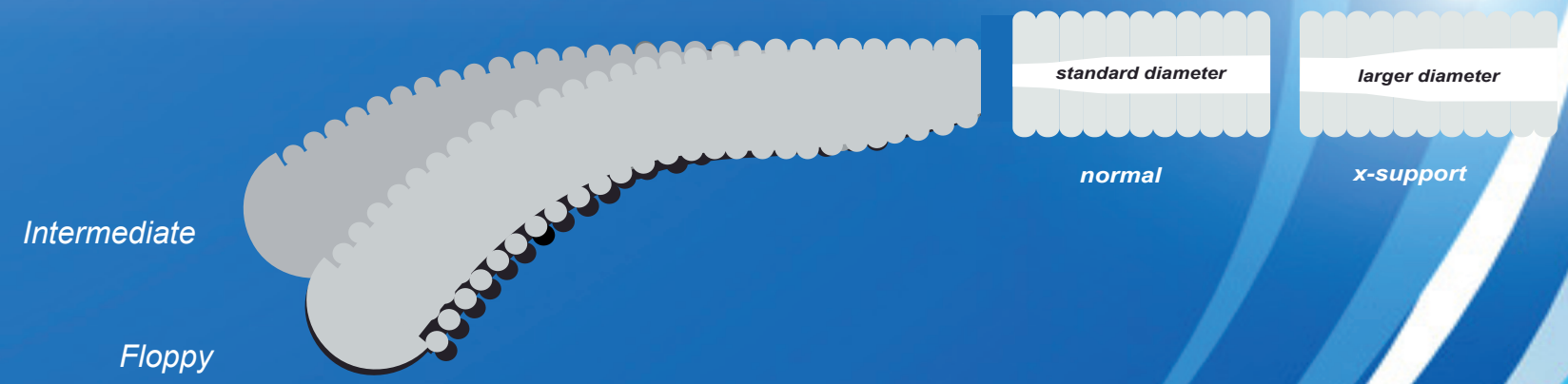
Marathon®

Strength its flexibility



Features

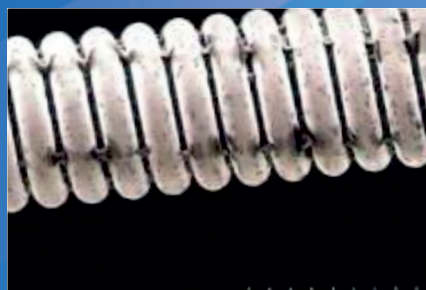
- ▶ Tip Load : 0.7 gm for Floppy
- ▶ Tip Load : >1.0 gm for Intermediate
- ▶ Directly Jointed SUS & Nitinol Shaft
- ▶ Duo Core Technology for superior torque transmission
- ▶ Available as a sterile pack.



Coating



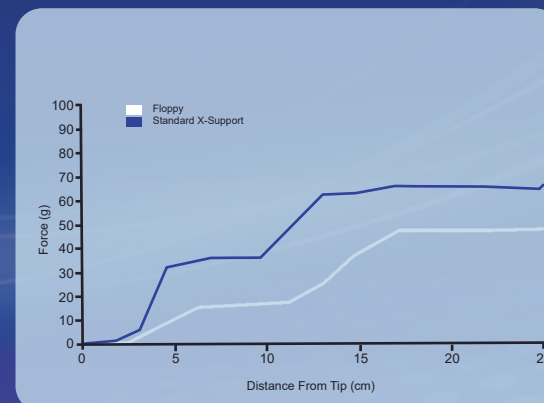
Conventional Film Coating that may tear/swell



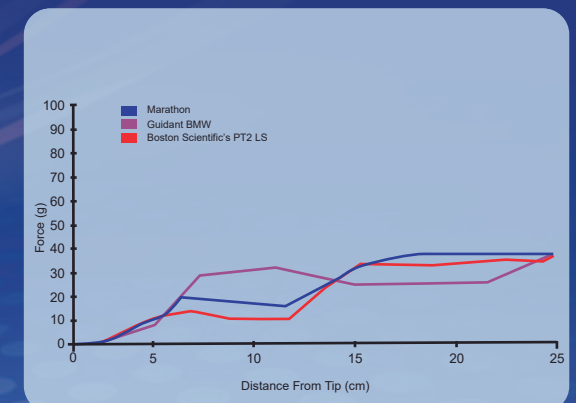
Deposits of Marathon Coating

Specifications

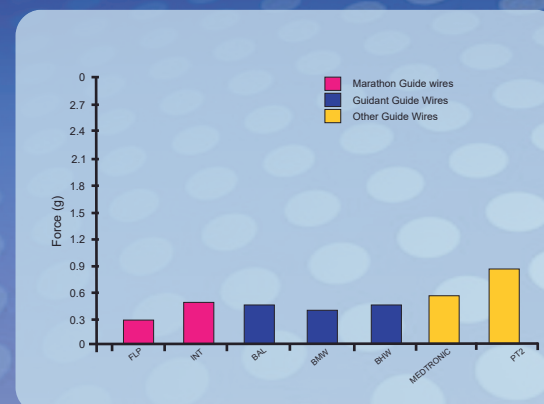
Diameter:	0.014"
Lengths:	195cm
Tip Stiffness	Floppy
Tip Load	0.7 gm
Tip Stiffness	Intermediate
Tip Load	>1.0 gm
Radiopaque Segments:	3cm Platinum Alloy Spring Coil.
Tip Shape:	Straight or J-Tipped.
Coil Coating:	Hydrophilic or Hydrophobic coating.



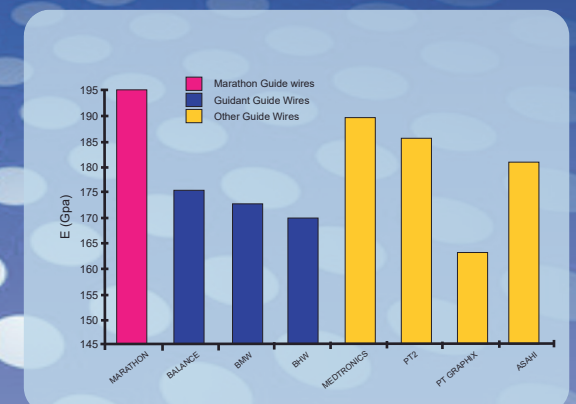
Variation in stiffness profile of the Marathon PTCA range



Comparison in stiffness profiles of a Marathon Floppy guide wire and other common guidewire



Tip Stiffness Results indicating the broad range of option available with the Marathon wire



The guide wires provide superior proximal stiffness for maximum pushability